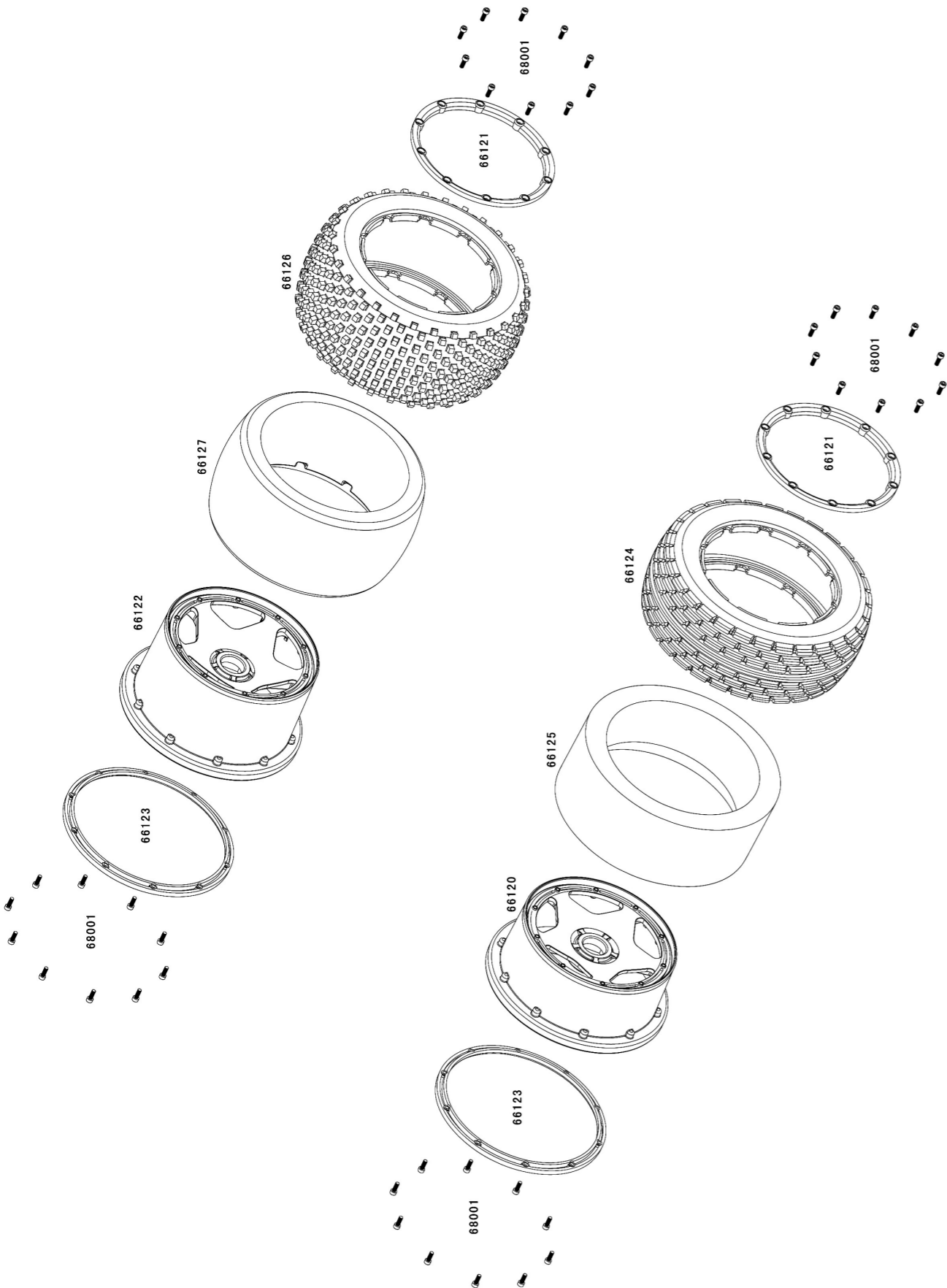


INSTRUCTION MANUAL

Baja

1/5th SCALE RACING CAR





Thank you

Thank you for Using Baja I Generation This Kit is designed to be fun to drive and uses top quality parts for durability and performance. The instruction manual you are reading was designed to be easy to follow yet thorough in its explanations. We want you to enjoy driving this high performance Baja I. If any question, pls contact us by Email, telephone or fax, we will reply you in time.



Caution

Failure to follow these instructions can damage your kit, and cause serious bodily injury or death.












Attention

Failure to follow these instructions can cause injury to yourself or others. you might also cause property damage or damage your kit.

Caution

To prevent any serious personal injury and/or damage to property, please be responsible when operating all remote controlled models. Extra attention is called for when operating any fuel powered model. These models can exceed speeds of 40 m.p.h. and use highly poisonous and flammable fuels. Children are forbidden to play below the age of 14.

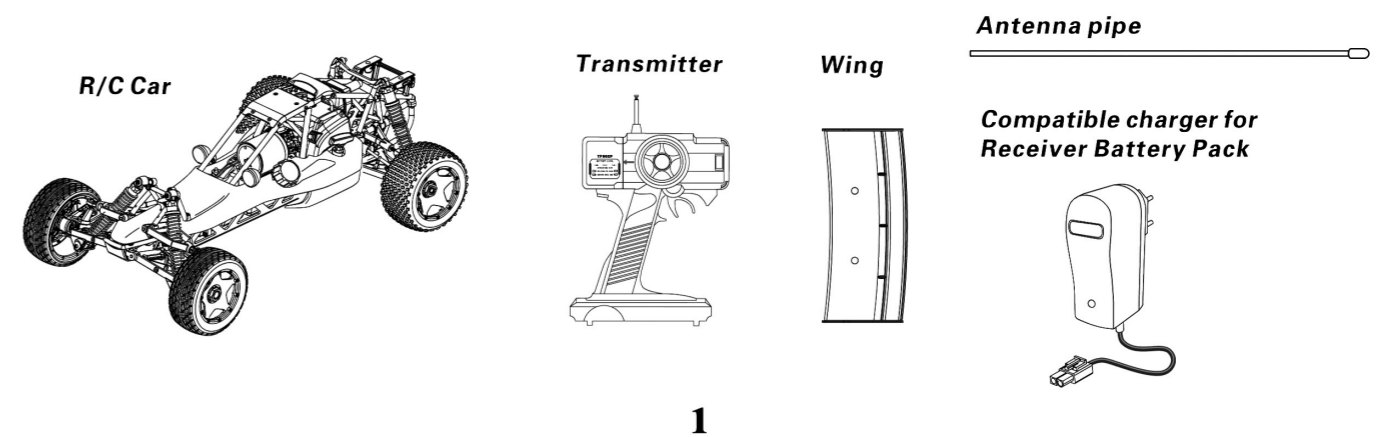
Safety Guidelines When Operating Gasoline Engines

-  This product uses a mixture of gasoline and two cycle oil for fuel. Please use extreme caution when handling gasoline.
-  Do not run near open flames or smoke while running your model or while handling fuel.
-  Always store fuel in a well ventilated place, away from heating devices, open flames, direct sunlight, or batteries.
-  Gasoline is flammable and poisonous. Gasoline powered model engines emit poisonous vapors. These vapors irritate eyes and can be highly dangerous to your health.
-  You must only use a mixture of gasoline and two cycle oil as fuel for this engine. Never use glow fuels intended for R/C cars.
-  Be aware that some parts will be hot after operation. Do not touch the exhaust or the engine until they have cooled.
-  After running, please empty the fuel tank before storing the car.
-  Keep fuel away from children.
-  Store in a well ventilated area.

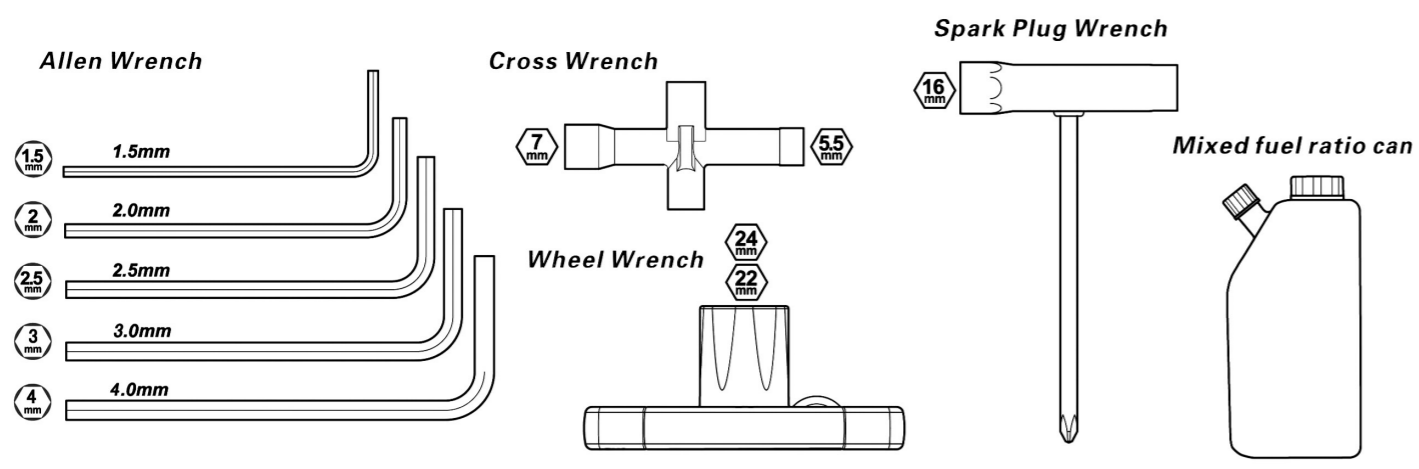
Features

This is a rear wheel drive 1/5th scale off-road buggy that is nearly 32" in length! Its design is revolutionary for large scale RC cars, following the style of classic baja I buggies with long suspension arms for great ground clearance and large suspension travel. The big size allows Baja I to go where smaller buggies can't and makes Baja I driving experience as close as you can get to the real thing. Baja I is big, but coming as a "Ready To Run" car and powered by standard gasoline it can't be easier to get ready for action. Everything is included in the kit-1. Preassembled Baja I chassis, 2. Prepainted Baja I shell, 3. Preinstalled high quality FM radio gear with built in fail safe, 6V receiver pack and charger, 4. Preinstalled massive 23cc gasoline engine providing plenty of power. All you need to do is fill up with standard gasoline and some oil, and off you go!

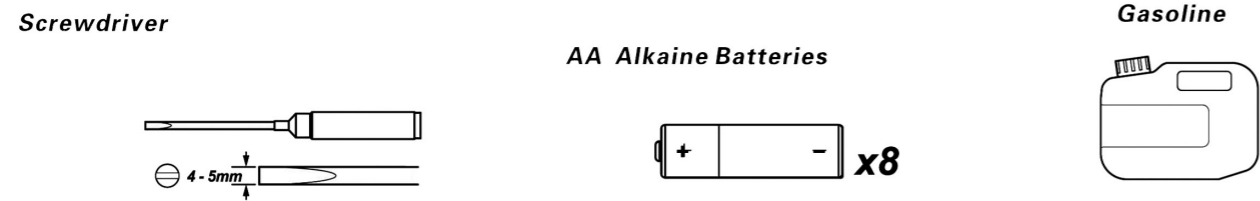
Components



Included Items



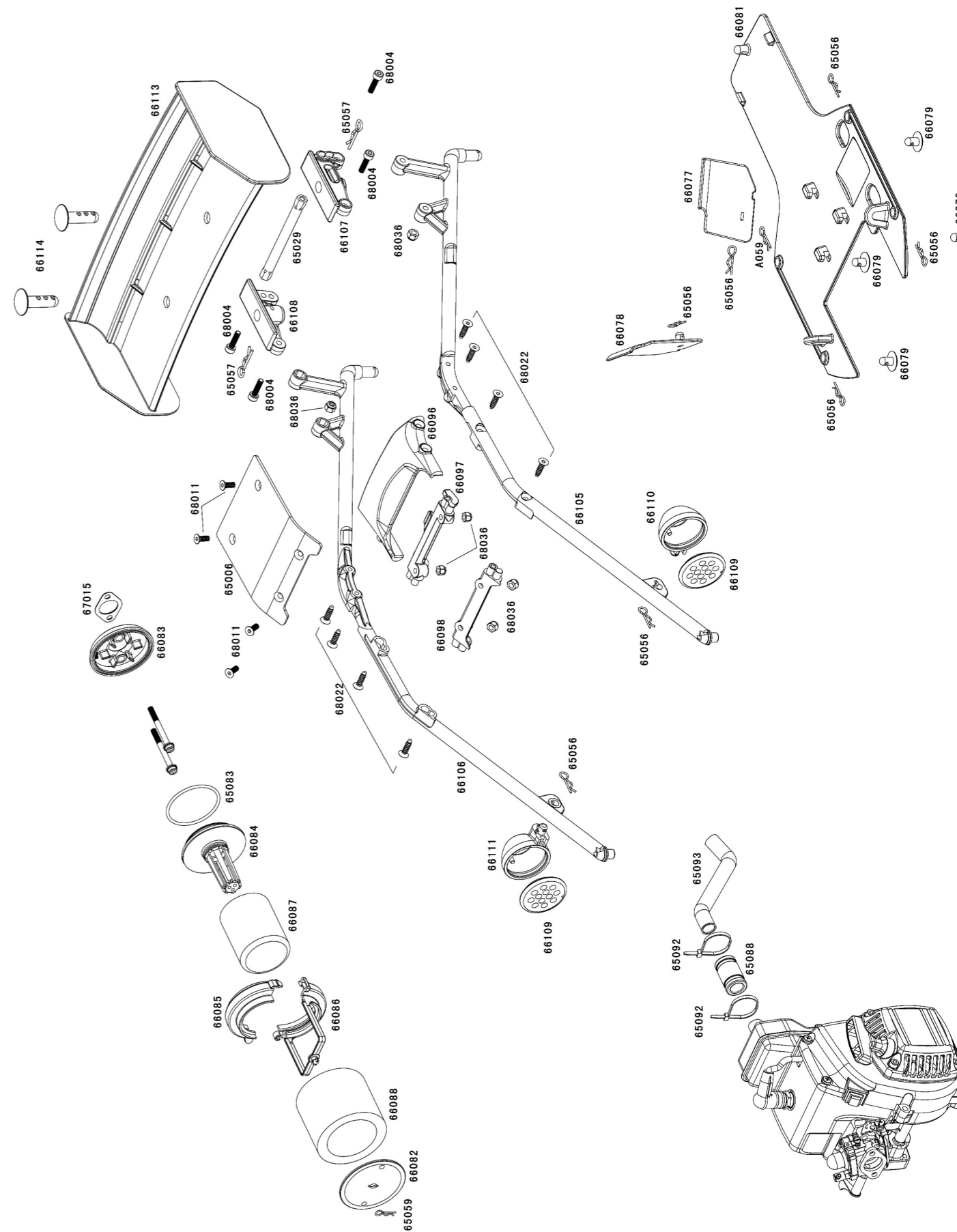
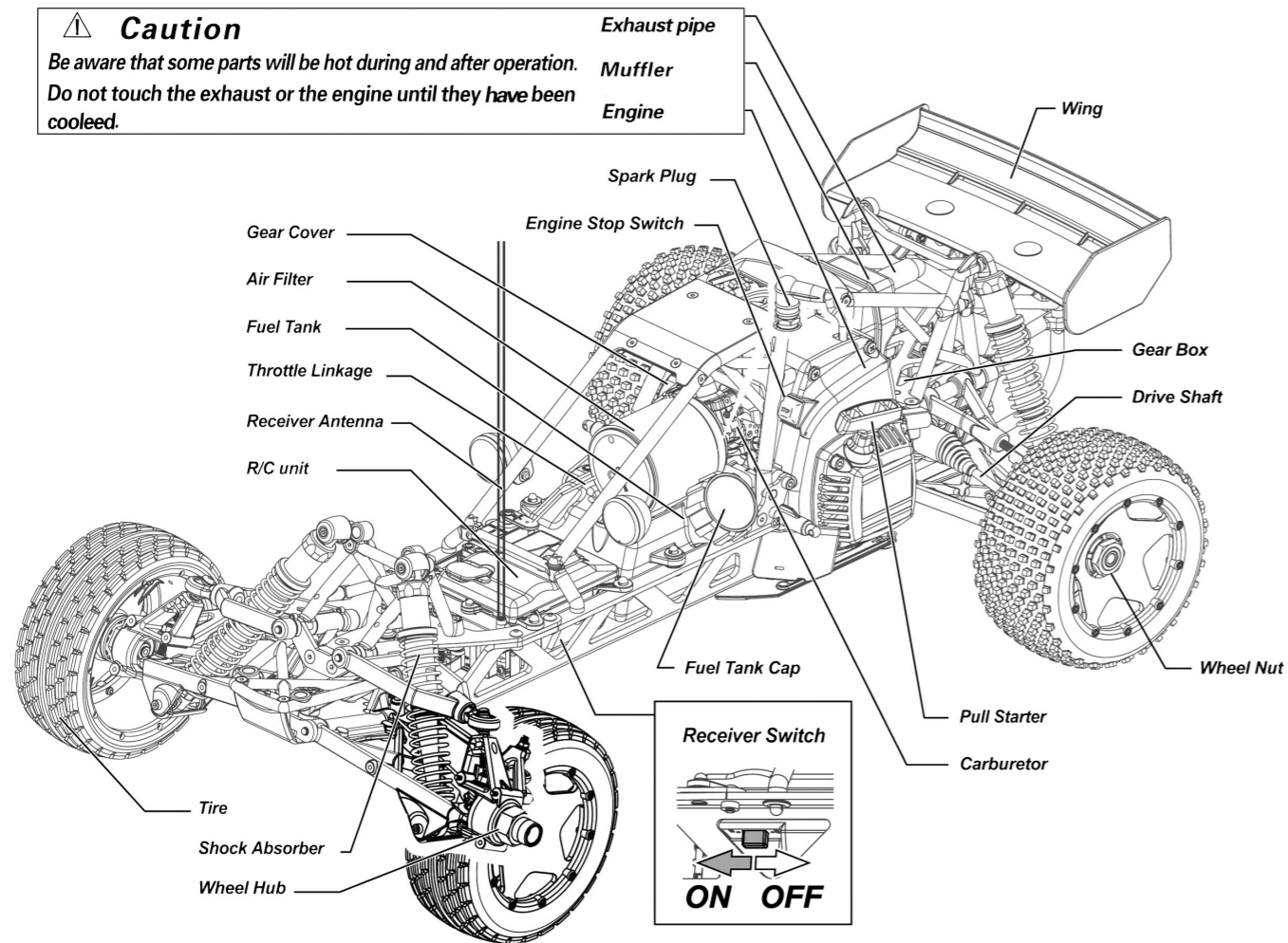
Equipment Needed

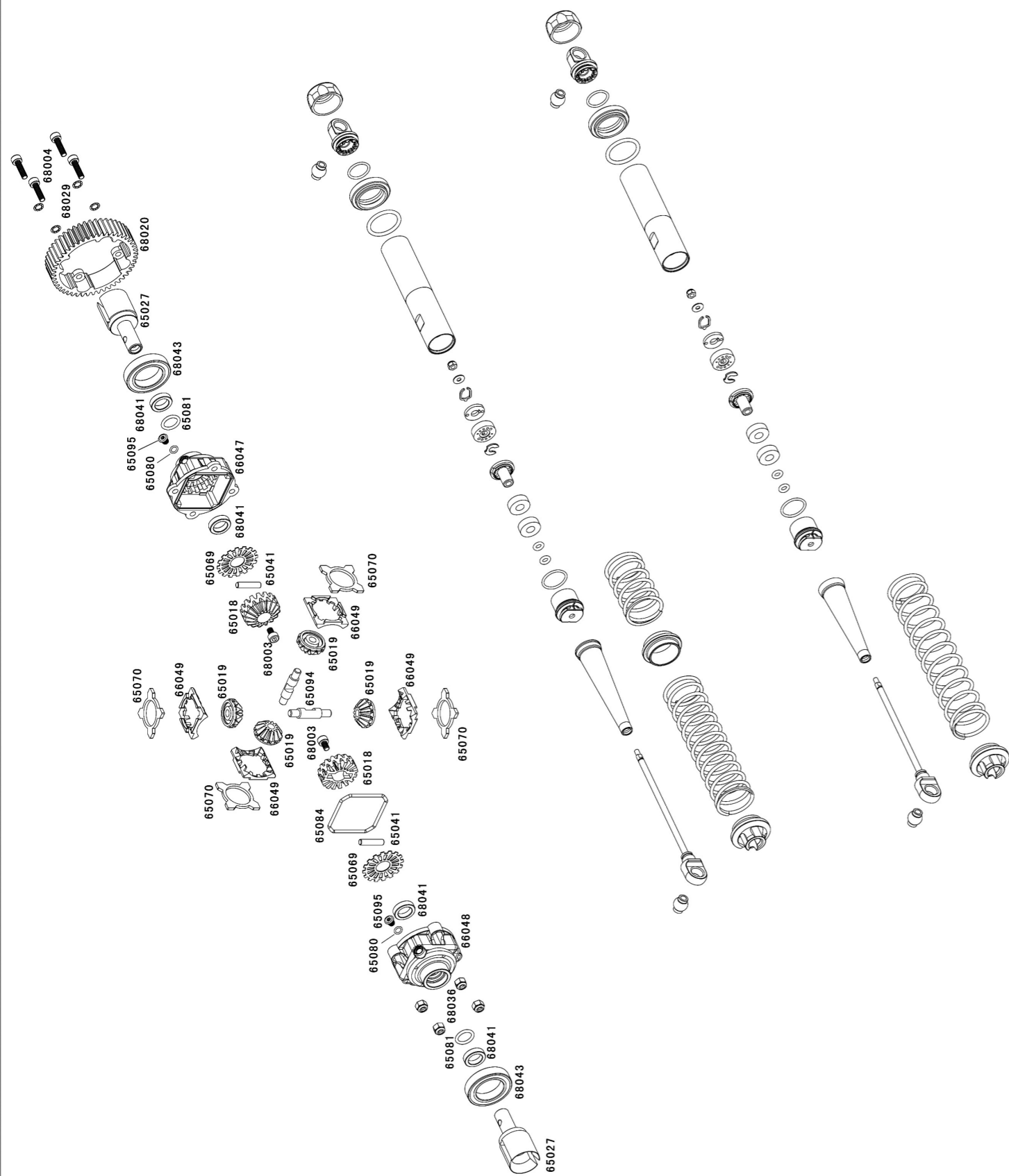


Chassis Details

Caution

Be aware that some parts will be hot during and after operation. Do not touch the exhaust or the engine until they have been cooled.

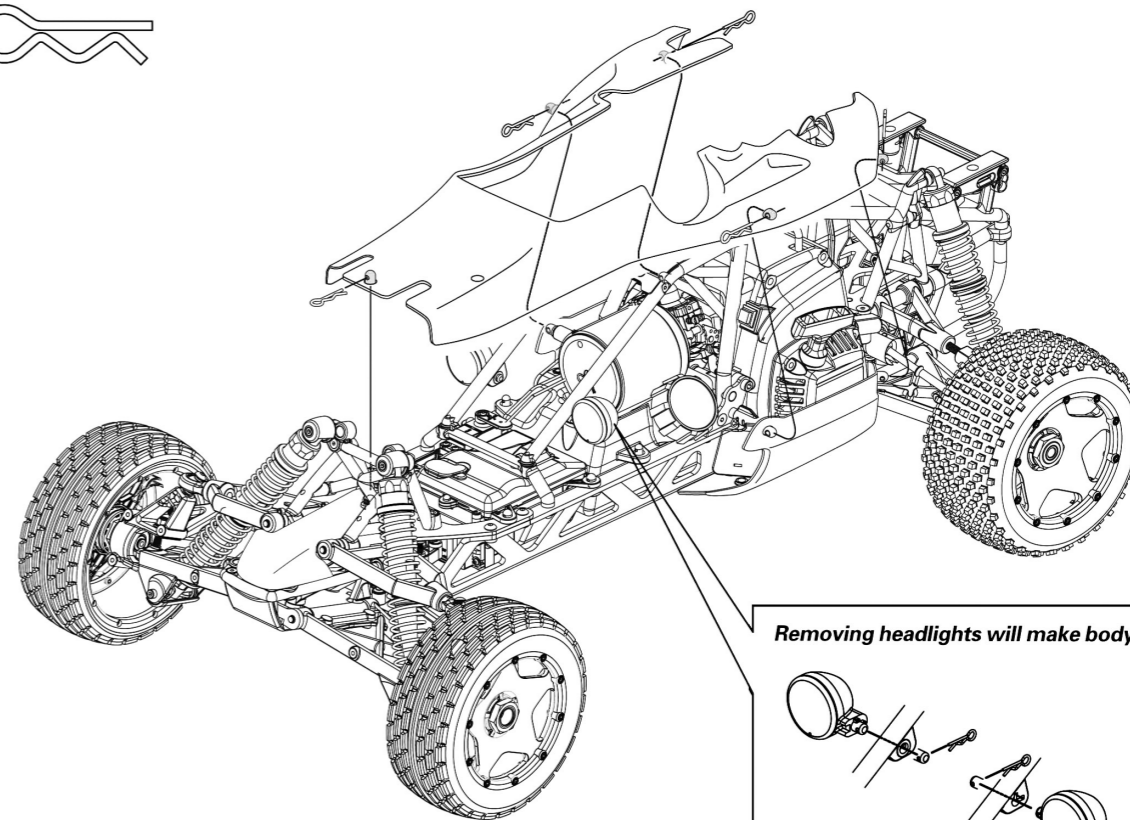




Preparation for Running

Removing the Body

Body pin(Large/8mm)



Removing headlights will make body removal easier.

BODY PIN(6mm)

Receiver Antenna Installation

Remove battery cover, then uncoil antenna wire, and push antenna wire through hole in R/C unit and through the antenna pipe. Secure the battery cover and install antenna pipe

1

2

3

R/C Unit

Antenna Pipe

Do not cut or shorten antenna wire.

Make sure antenna is fully inserted.

Wing Installation

Body Pin (Large/8mm)

Wing

Charging Receiver Battery

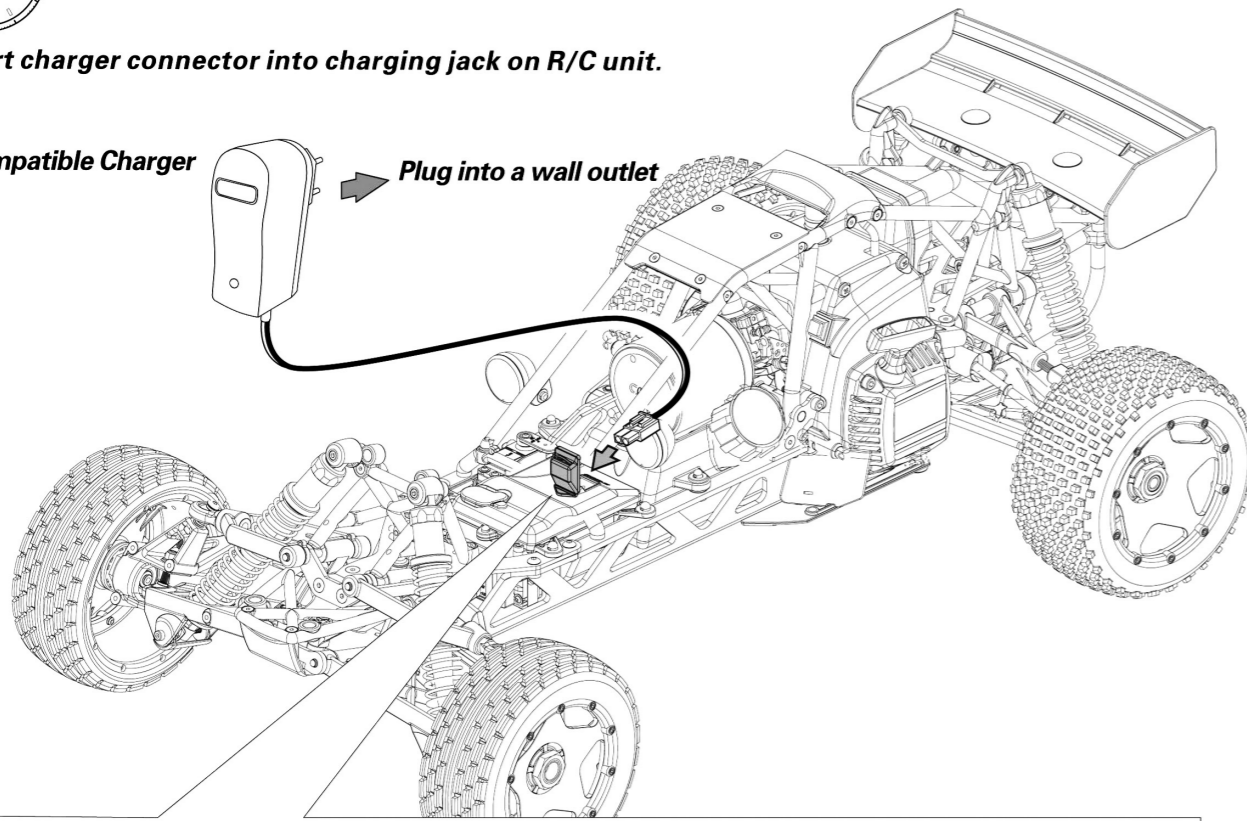


! Charge time 4 hours.

Insert charger connector into charging jack on R/C unit.

Compatible Charger

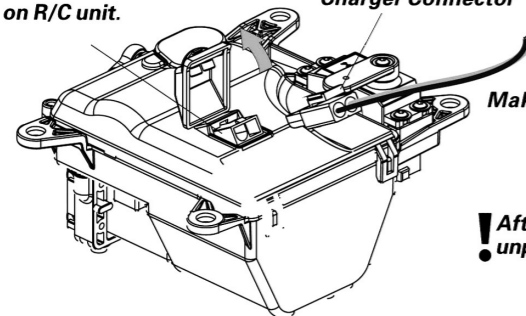
Plug into a wall outlet



R/C Unit

Charging Jack on R/C unit.

Charger Connector

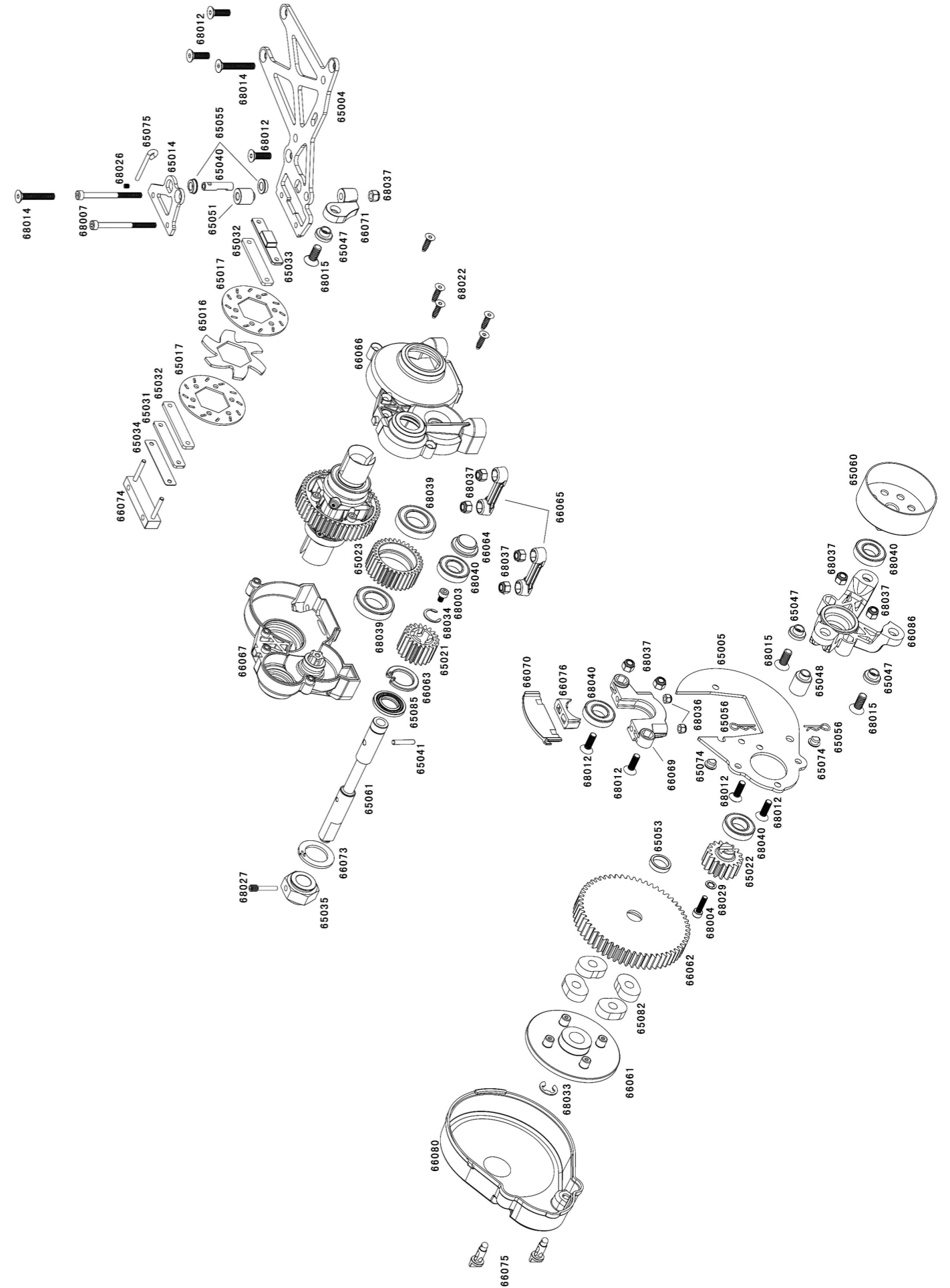


Make sure charger jack fully inserted.

! After charging disconnect the battery and unplug the charger from wall.

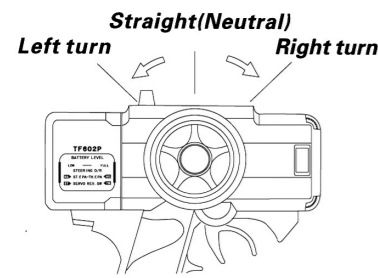
⚠ Caution

- Use included charger only for included receiver pack.
- Do not use any other battery.
- Charge time for discharged battery: 4 hours.
- Do not charge battery for longer than 4 hours. This will cause over heating and battery damage.
- Do not charge other batteries with this charger. Serious damage or injury can occur.
- Keep battery out of reach of children. Keep battery away from water.
- A fully charged receiver battery can last up to 45 minutes.

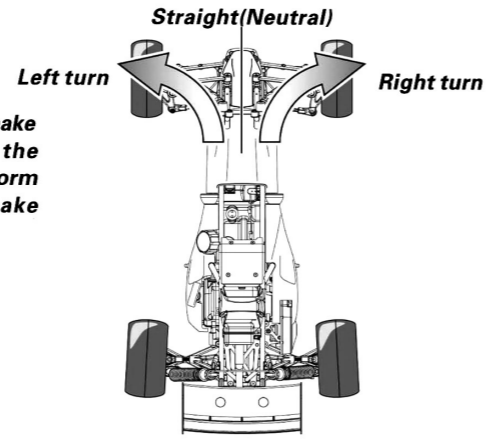


Transmitter Operation

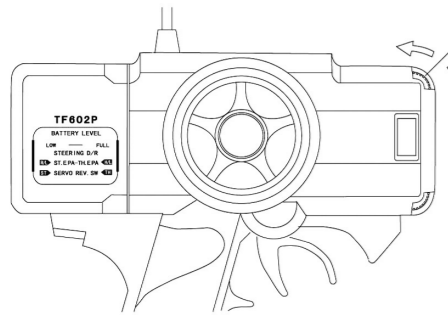
Steering Wheel



Turning the transmitter wheel left and right will make the front tires of the car do the same. Turning the wheel a small amount will make the model perform turn. Turning the wheel a large amount will make the model perform a sharp turn.

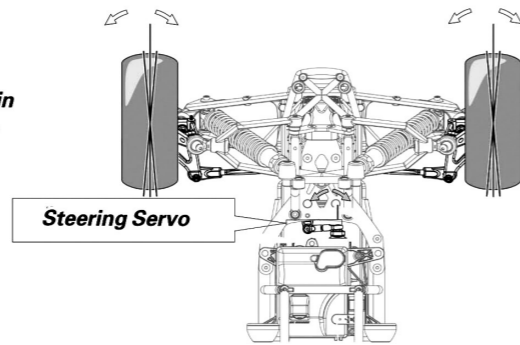


Steering Trim Setup

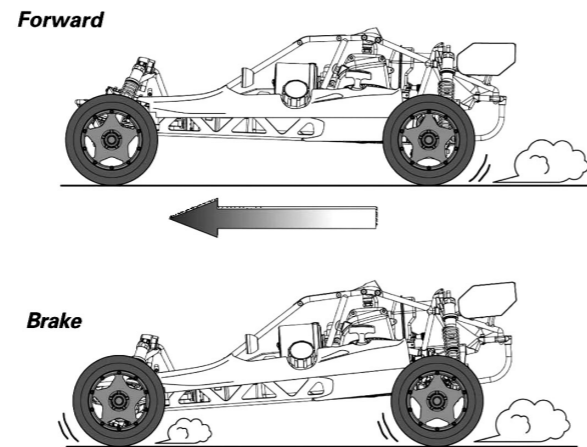
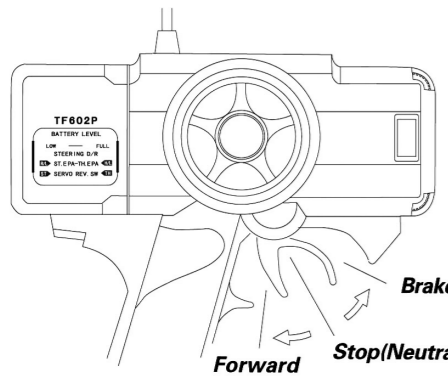


Steering Trim

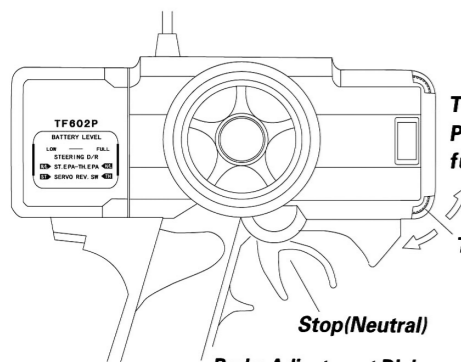
Turn steering trim to set tires in completely centered position.



Throttle Trigger



Throttle Linkage Setup

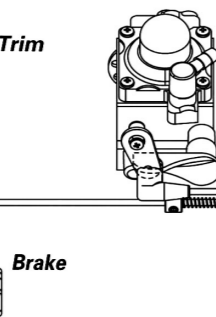


Turn throttle trim little by little and adjust rods as shown. Push the car by hand and push the trigger to test brake function.

Throttle Trim

Stop(Neutral)

Brake Adjustment Dial



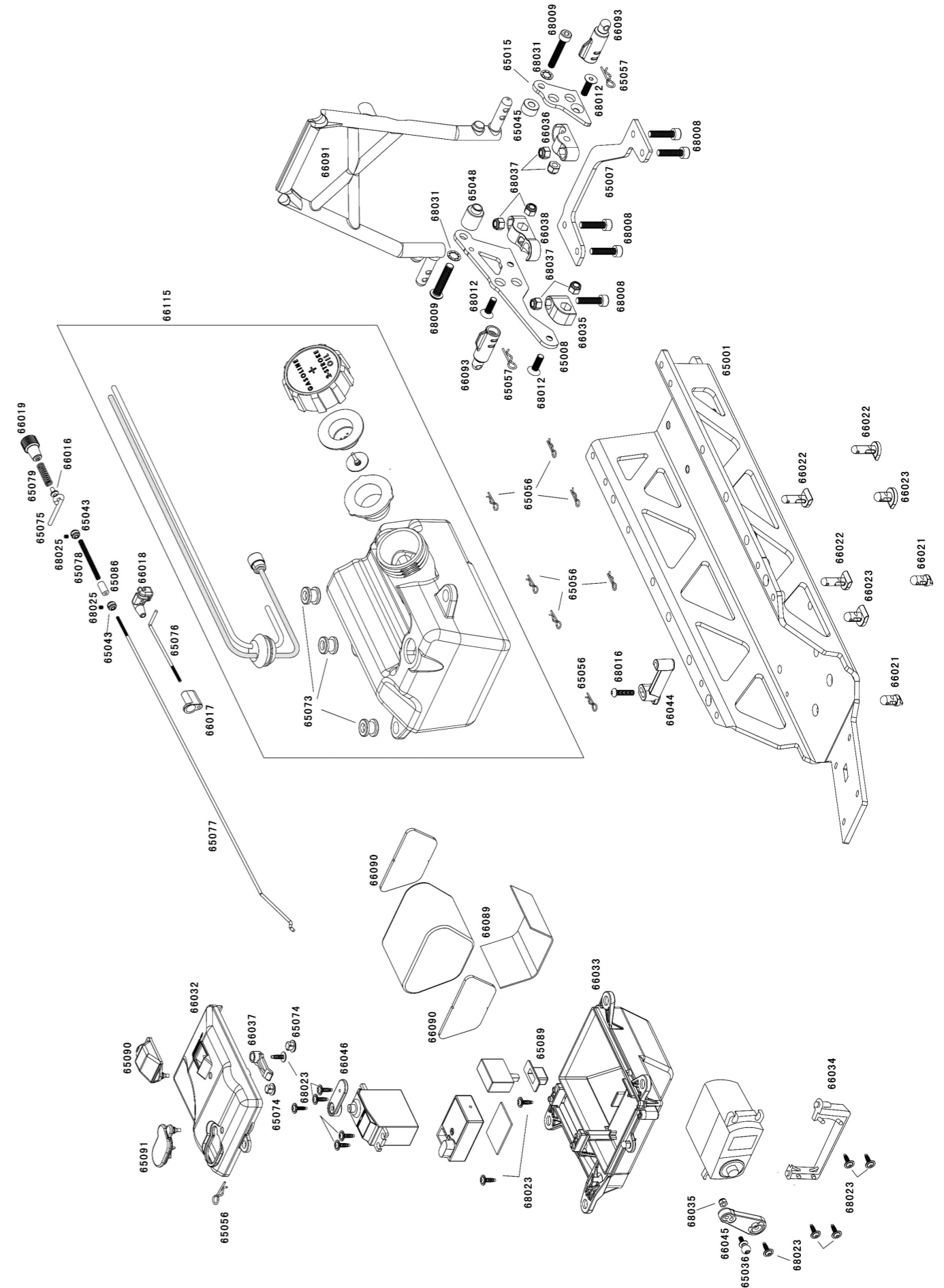
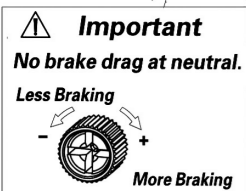
Brake

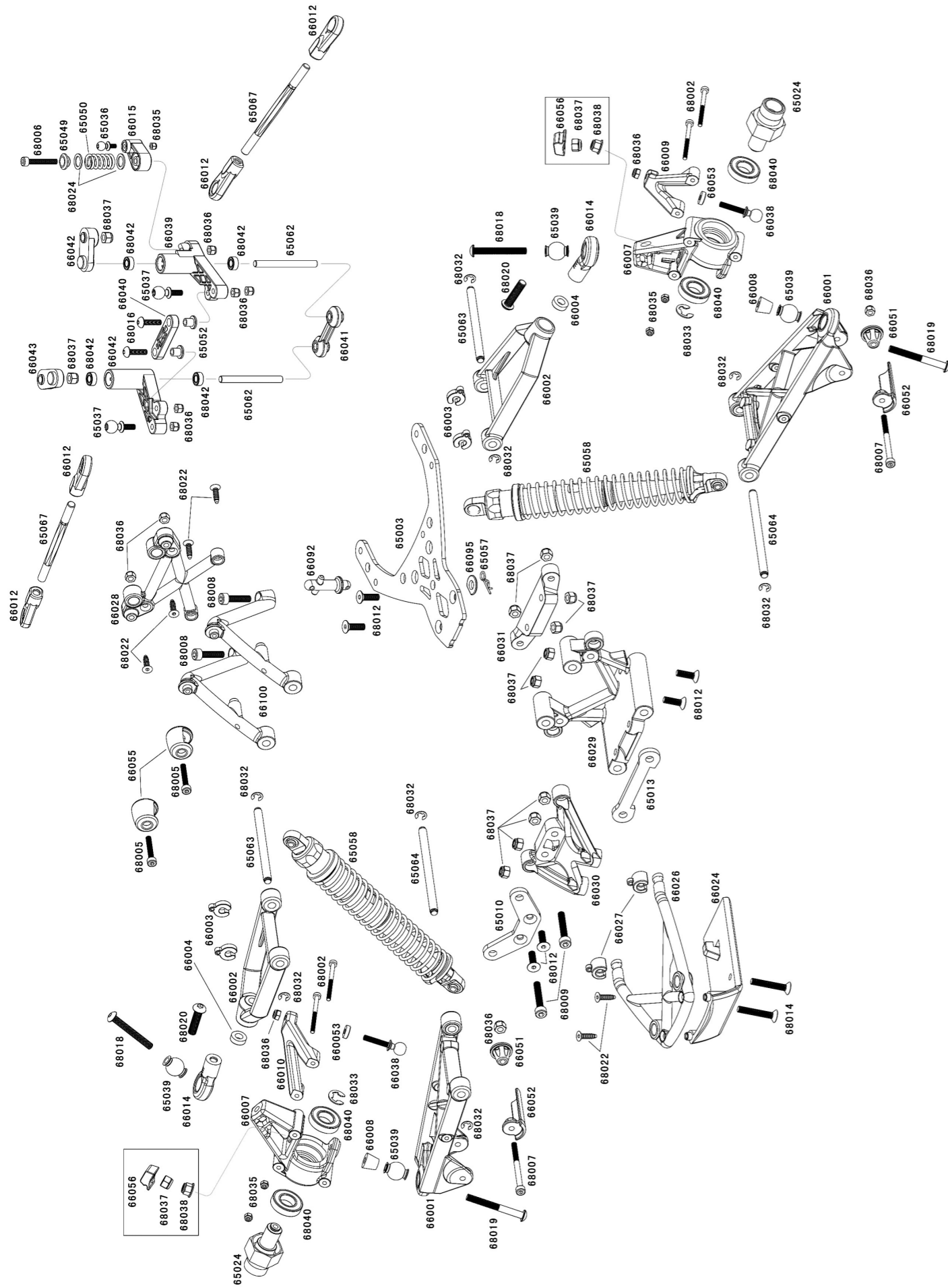
1mm(0.04")

Throttle Servo

Important

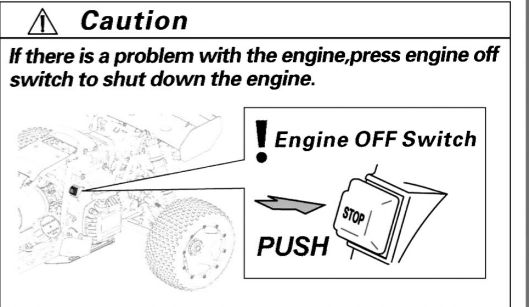
If throttle linkage is not set up correctly the car may lose control after the engine is started.





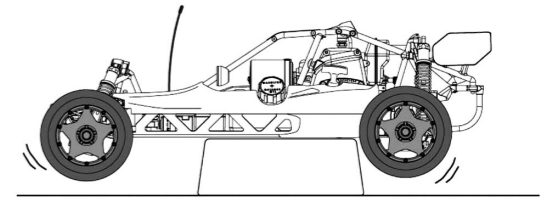
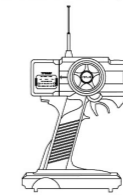
Engine Starting

- These instructions will explain the starting procedure. Please read them carefully and fully understand them before starting the engine for the first time.
- Make sure no one is using the same frequency.
- Turn on transmitter first and receiver second. If you turn on receiver first, it can cause you to lose control of the car.
- Make sure linkage setup is correct before running (See Section 2-3).
- After running you must check the car and perform routine maintenance.
- If there is a problem with the engine, press engine OFF switch to shut down the engine.



Preparation for engine start

Keep the wheels off the ground.

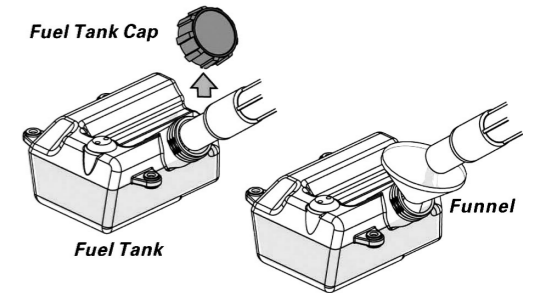


Fill Fuel Tank

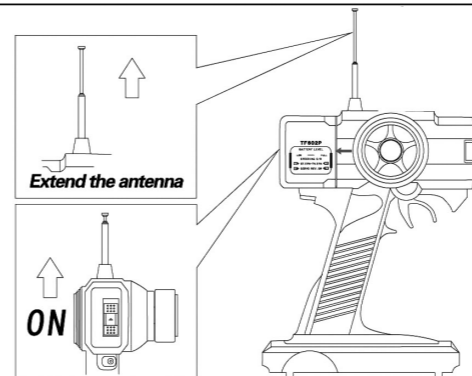
Clean any dirt from gas cap before removing. Dirt and debris should never get into the fuel tank. Fill the tank with fuel. Make sure the gas cap is screwed on tightly before starting the engine.

You must only use a mixture of gasoline and two stroke oil as fuel for this engine. Never use glow fuels intended for R/C cars.

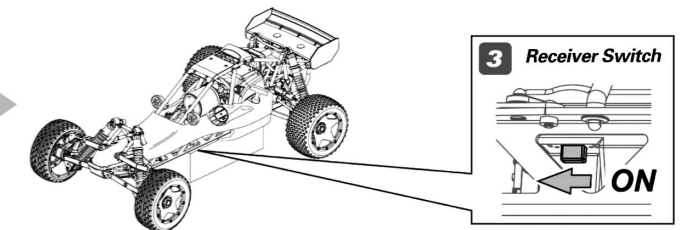
Caution
! Be careful not to tilt the car, gasoline may leak from the vent hole.



Turn on Radio System

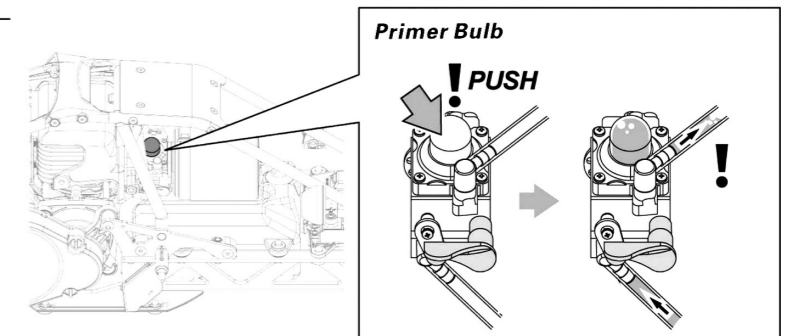


Make sure no one is using the same frequency. Turn on transmitter first, then turn on the receiver. Check the throttle and steering functions and check the radio range before starting the engine. If you switch on the R/C car first before the transmitter, you may lose control of the R/C car.



Priming Engine

To prime the engine, fill the tank with fuel and push the primer bulb until fuel shows in the return tube (Yellow). After the engine has been run for the first time, if fuel shows in the yellow return tube, you do not need to prime the engine.

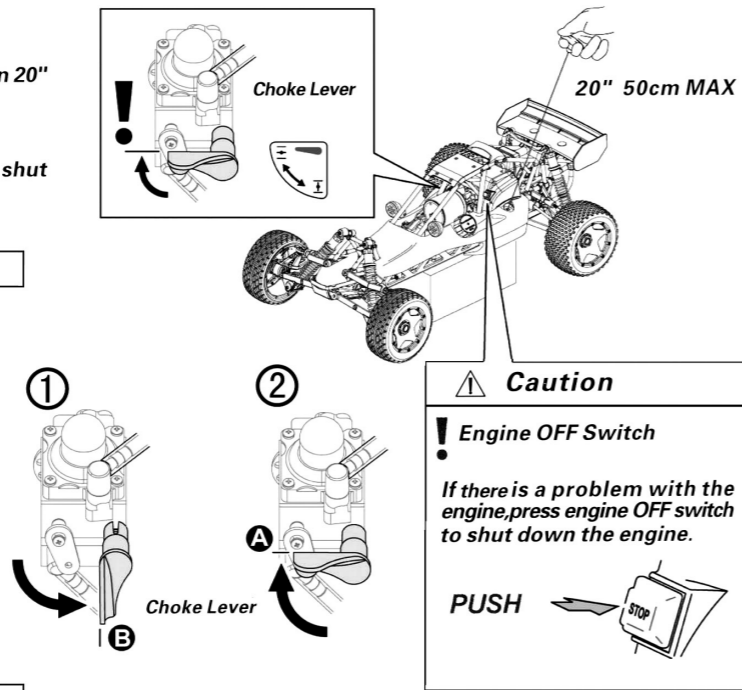


Engine Start

Make sure choke lever is in the horizontal position before starting.
Start the engine by pulling the starter cord in short pulls (No longer than 20" max)
The engine must never be run without the air filter in place.
If there is a problem with the engine, press the engine OFF switch to shut down the engine.

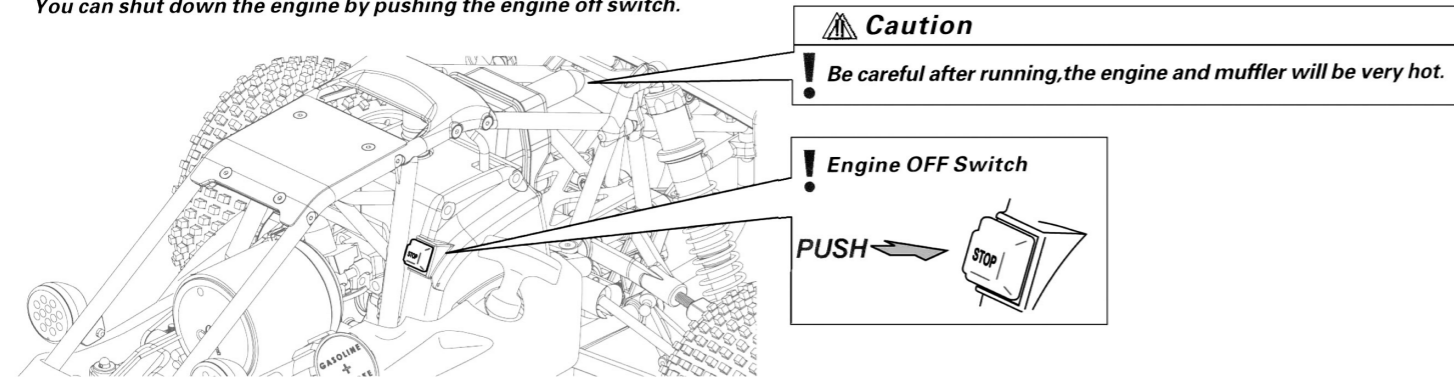
Engine Start Tips

- 1 If you have trouble starting the engine, move the choke lever to the vertical position ①.
- 2 Pull the starter cord until you hear the engine is almost starting. Then move the choke lever back to the horizontal position ② and try starting the engine.
If you pull the starter cord too much while the choke lever is in the vertical position ①, you might flood the engine.



Engine Stop

You can shut down the engine by pushing the engine off switch.



Turning R/C Off

After the engine is shut off, turn off receiver first, then turn off transmitter.

